



The Perfect Technologies

Professional Broadcast Monitor



BON PRODUCT LINEUP

2008 Multi Format LCD Monitor

- BLM Series:

BLM BASIC, BLM PRO, BLM DUAL, BLM QUAD

- BLM-070 (7") Field, Production & Post-Production, OB Van
- BLM-084 (8.4") Field, Production & Post-Production, OB Van
- BLM-170 (17") Field, Production & Post-Production, OB Van
- BLM-200 (20") Production, Post-Production, OB Van
- BLM-240 (24") Production, Post-Production, OB Van
- BLM-260 (26") Production, Post-Production, OB Van
- BLM-320 (32") Production, Post-Production
- BLM-370 (37") Production, Post-Production
- BLM-420 (42") Production, Post-Production
- BLM-470 (47") Production, Post-Production
- BLM-570 (57") Production, Post-Production



The Perfect Technologies

Professional Broadcast Monitor



BON's products, Multi Format LCD Monitors, provide a high core technology to display various kind of digital video input signal any format HD/SD SDI, Composite, RGB, Component, Y/C, VGA and DVI.

The core technology of BLM Series offer an elegant slim design with high quality images with a full range of facilities for monitoring and measuring broadcast video signals and computer system.

BLM series offer fast response time for smooth video streaming, high brightness, contrast ratio, wide viewing angles, accurate color reproduction and quality picture consistency required in demanding HD Monitoring application.

Especially, BON products basically customize all products with color temperature setting, gamma setting by auto calibration software and interface for variety of networking with wall control system.

BLM Series also provide with various display function such as waveform monitoring, vector scope, time code and audio metering display and offer user friendly menu function to control brightness, color temperature and EQ function of HD SDI input.

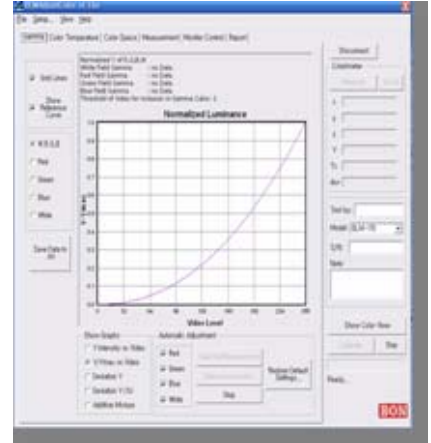
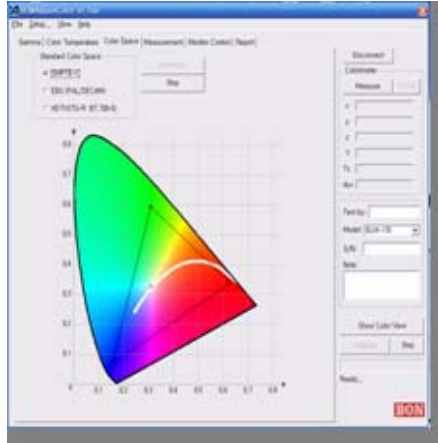
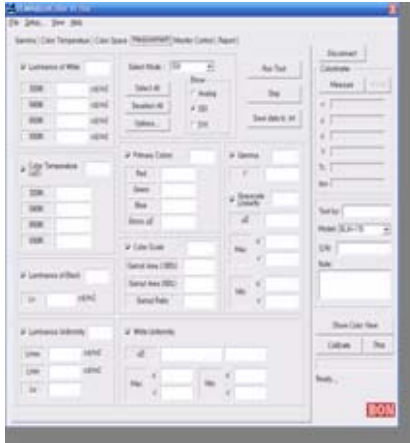




The Perfect Technologies

Professional Broadcast Monitor

BLM Automatic Alignment



BLM Monitor undergoes an extensive gamma and color calibration before shipment from our factory. For making BLM Monitors suitable for professional broadcasting applications, compensation is conducted for BLM series in 256 or 1024 discrete RGB step, rated gamma properties are reproduced, and gradation suitable for broadcasting is achieved. BLM models provide for full digital calibration of the display to meet REC 709.

Native HD Resolution

The 24", 26", 37", 42", 47", 57" of BLM Models feature 1920x1080 resolution, making a true native HD monitor and can reproduce native 1080i/p, 720p, 480P, 1280i, 1035i video images in their original form with no loss of quality due to scaling.

Wide Viewing Angle

BLM Models provide the most stable images with 178 view angle degrees for 17", 20", 24", 26", 32", 37", 42", 47", 57".

Closed Caption Decoding

The closed caption information embedded in digital 708 and analogue 608 signal.

High Performance Monitor

BON algorithm provides the highest level of de-interlacing and scaling, producing sharp, clear images with true-to-the original color reproduction.



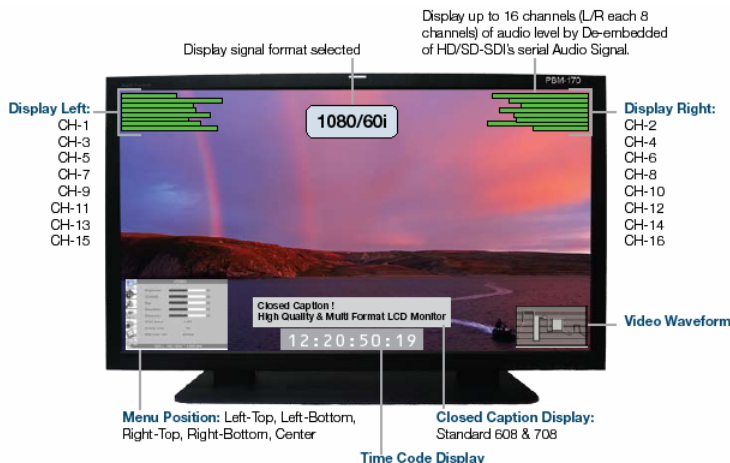
The Perfect Technologies

Professional Broadcast Monitor



Main Features & Functions

- Compiles with EBU-2330 TECH, SMPTE-C and ITU-R BT.709 Standards
- Cutting Edge De-Interlacing and Scaling Technology
- Native HD Resolution, Gamma Compensation, 178 Wide View Angle, Superior Black Color Display
- Fast Response Time for High Motion Video
- Multi-Format HD/SD SDI , HD 2k format, 1080p and 1080i,etc
- Diagonal Line Compensation by MADI (Motion Adaptive De- interlace) and LADI (Low Angle Diagonal Interpolation)
- High Speed Response / Fast Mode / Response Time of 8 ms GTG
- Compatible with Auto Color Calibration Software for Gamma, White Point, Luminance Level
- Color Temperature - 3200', 5400', 6500',9300',User, VAR
- Waveform, Vector Scope, Time Code Display,
- Under Scan/ Zero Scan / Over Scan / Zoom
- Pixel to Pixel Display (BLM-084/170 Models)
- PiP (Picture in Picture) & PaP (Picture and Picture)
- Audio Input/Out, Audio Metering Display, Built In Stereo Speaker, Ear Phone Jack
- Closed Caption Decoding (608,708), Internal Pattern Generator (Basic, Dual)
- HDMI & Various Marker Display
- Tally Lamp Function / Picture Adjustment / Easy OSD Menu
- External Control (RJ-45), Serial/Upgrade Port(RJ-11)
- Neutral Density Filter (Black level, Contrast)
- DUAL LINK(OPTION) -Dual HD SDI YPbPr 4:2:2, Dual HD YPbPr/RGB 4:4:4





The Perfect Technologies

Professional Broadcast Monitor

Multi Format LCD Monitor – BLM Series Summary

- Product Lineup 7"/ 8.4"/ 17"/20"/ 24"/ 26"/ 32"/37"/ 42"/ 47"/57" Multi Format LCD Monitor
- Complies with EBU-2330 Tech, SMPTE-C and ITU-R BT.709 Standard.
- Intelligent Connection For Alignment and Calibration (ICAC)
- Native HD Resolution, Superior Black Level Performance, 178 Wide View Angle
- Waveform, Vector Scope, Time Code, Audio Metering Display, PaP & PiP function, Built in Stereo Speaker, Ear Phone Jack



BLM-070

(7 Inch Monitor)

- Resolution 800 x 480
- Aspect ratio 15:9
- Contrast 300:1
- Viewing Angle : 130/115 °

- Input : SDI(1EA,BNC)
Analog(3EA,BNC), DVI-I(1)
- Output : SDI(1EA,BNC)
- Power : 12V DC (11V~17V)
- Rack Kit, Hood, Tripod Head



BLM-084

(8.4 Inch Monitor)

- Resolution 1024 X 768
- Aspect ratio 4:3
- Contrast 400:1
- Viewing Angle : 170 °

- Input : SDI(2EA,BNC)
Analog(3EA,BNC), DVI-I(1)
- Output : SDI(1EA,BNC)
Analog(3EA,BNC)
- Power : 12V DC (11V~17V)
- Rack Kit, V-Mount, Hood, Tripod Head



BLM-170

(17 Inch Monitor)

- Resolution 1366 X 768
- Aspect ratio 16:9
- Contrast 900:1
- Viewing Angle : 178 °

- Input : SDI(2EA,BNC)
Analog(3EA,BNC), DVI-I(1)
- Output : SDI(1EA,BNC)
Analog(3EA,BNC)
- Power:12V DC (11V~17V) / AC100-230V
- V-Mount, Hood, NDF, Wall Bracket, Rack Kit



BLM-200

(20 Inch Monitor)

- Resolution 1680 X 1050
- Aspect ratio 16:10
- Contrast 800:1
- Viewing Angle : 178 °

- Input : SDI(2EA,BNC)
Analog(3EA,BNC), DVI-I(1)
- Output : SDI(1EA,BNC)
Analog(3EA,BNC)
- Power: AC100-230V
- NDF, Wall Bracket, Rack Kit



The Perfect Technologies

Professional Broadcast Monitor



BLM-240

(24 Inch Monitor)

- Resolution 1920 X 1200
- Aspect ratio 16:10
- Contrast 800:1
- Viewing Angle : 178 °

- Input : SDI(2EA,BNC)
Analog(3EA,BNC), DVI-I(1)
- Output : SDI(1EA,BNC)
Analog(3EA,BNC)
- Power: AC100-230V
- NDF, Wall Bracket, Rack Kit



BLM-260

(26 Inch Monitor)

- Resolution 1920 X 1200
- Aspect ratio 16:10
- Contrast 800:1
- Viewing Angle : 178 °

- Input : SDI(2EA,BNC)
Analog(3EA,BNC), DVI-I(1)
- Output : SDI(1EA,BNC)
Analog(3EA,BNC)
- Power: AC100-230V
- NDF, Wall Bracket



BLM-320

(32 Inch Monitor)

- Resolution 1366 X 768
- Aspect ratio 16:9
- Contrast 1000:1
- Viewing Angle : 178 °

- Input : SDI(2EA,BNC)
Analog(3EA,BNC), DVI-I(1)
- Output : SDI(1EA,BNC)
Analog(3EA,BNC)
- Power: AC100-230V
- NDF, Wall Bracket



BLM-370

(37 Inch Monitor)

- Resolution 1920 X 1080
- Aspect ratio 16:9
- Contrast 800:1
- Viewing Angle : 178 °

- Input : SDI(2EA,BNC)
Analog(3EA,BNC), DVI-I(1)
- Output : SDI(1EA,BNC)
Analog(3EA,BNC)
- Power: AC100-230V
- NDF, Wall Bracket



BLM-420

(42 Inch Monitor)

- Resolution 1920 X 1080
- Aspect ratio 16:9
- Contrast 1300:1
- Viewing Angle : 178 °

- Input : SDI(2EA,BNC)
Analog(3EA,BNC), DVI-I(1)
- Output : SDI(1EA,BNC)
Analog(3EA,BNC)
- Power: AC100-230V
- NDF, Wall Bracket



The Perfect Technologies

Professional Broadcast Monitor

(20 Inch HD LCD Monitor)



BLM-470

(47 Inch Monitor)

- Resolution 1920 X 1080
- Aspect ratio 16:9
- Contrast 1300:1
- Viewing Angle : 178 °

- Input : SDI(2EA,BNC)
Analog(3EA,BNC), DVI-I(1)
- Output : SDI(1EA,BNC)
Analog(3EA,BNC)
- Power: AC100-230V
- NDF, Wall Bracket



BLM-570

(57 Inch Monitor)

- Resolution 1920 X 1080
- Aspect ratio 16:9
- Contrast 2000:1
- Viewing Angle : 178 °

- Input : SDI(2EA,BNC)
Analog(3EA,BNC), DVI-I(1)
- Output : SDI(1EA,BNC)
Analog(3EA,BNC)
- Power: AC100-230V
- NDF, Wall Bracket





The Perfect Technologies

Professional Broadcast Monitor

Multi Format 7 Inch LCD Monitor



BLM-PRO 070

Complies with EBU-2330 TECH, SMPTE-C and ITU-R BT.709 Standards
 Cutting edge De-interlacing and Scaling Technology
 Fast Response Time for high motion video
 800 x 480 (15:9) Native Resolution
 350 cd High Brightness, 300:1 Contrast
 130° Viewing Angle Display
 HD/SD SDI, Composite, RGB, YUV, Y/C, UXGA and DVI Inputs
 Supports all HD/SD signal formats @ 50Hz and 60Hz respectively
 Analog & Embedded Audio Inputs, Internal Speaker
 Intelligent Connection for Alignment & Calibration (ICAC)
 Pixel to Pixel Mode, Tally, DC Operation
 Waveform Function, Vector Scope, 8 CH Audio Metering Display, VITC
 Various Markers Display, Safe Area in HD & SD
 H/V delay, Blue only & Mono mode, Picture and Picture
 Closed Caption Decoding, Internal Pattern Generator
 Underscan/ Overscan/ Normal / Zoom
 Programmable Front Pushbutton Controls
 Intuitive OSD Display
 Remote Control For Wall Control System
 Programmable GPI control
 RS 422 Remote Control
 Built-in V-mount

OPTION : Rackmount, Hood, Tripod Head, Carrying Case

Multi Format 8.4 Inch LCD Monitor



BLM-BASIC 084

Complies with EBU-2330 TECH, SMPTE-C and ITU-R BT.709 Standards
 Cutting edge De-interlacing and Scaling Technology
 Fast Response Time for high motion video
 1024 x 768 (4:3) Native Resolution
 400 cd High Brightness, 400:1 Contrast
 170° Viewing Angle Display
 HD/SD SDI, Composite, RGB, YUV, Y/C, UXGA and DVI Inputs
 Supports all HD/SD signal formats @ 50Hz and 60Hz respectively
 Embedded Audio Inputs
 Intelligent Connection for Alignment & Calibration (ICAC)
 Pixel to Pixel Mode, Tally, DC Operation
 Waveform Function, Vector scope, 16 CH Audio Metering Display, VITC
 Various Markers Display, Safe Area in HD & SD
 H/V delay and Mono Controls, Picture and Picture
 Closed Caption Decoding, Internal Pattern Generator
 Underscan/ Overscan/ Normal / Zoom
 Programmable Front Pushbutton Controls
 Intuitive OSD Display
 Remote Control For Wall Control System
 Programmable GPI control
 RS 422 Remote Control

OPTION : Rackmount, Hood, Tripod Head, V-Mount, Wallmount, Carrying Case



The Perfect Technologies

Professional Broadcast Monitor

Multi Format 17 Inch LCD Monitor



BLM-BASIC 170



BLM-DUAL 170

Complies with EBU-2330 TECH, SMPTE-C and ITU-R BT.709 Standards
 Cutting edge De-interlacing and Scaling Technology
 Fast Response Time for high motion video
 1366 x 768 (16:9) Native Resolution
 350 cd High Brightness, 900:1 Contrast
 178° Viewing Angle Display
 HD/SD SDI, Composite, RGB, YUV, Y/C, UXGA and DVI Inputs
 Supports all HD/SD signal formats @ 50Hz and 60Hz respectively
 Analog & Embedded Audio Inputs, Internal Speaker
 Intelligent Connection for Alignment & Calibration (ICAC)
 Pixel to Pixel Mode, Tally, DC Operation
 Waveform Function, Vector Scope, 16 CH Audio Metering Display, VITC
 Various Markers Display, Safe Area in HD & SD
 H/V delay and Mono Controls, Picture and Picture
 Closed Caption Decoding, Internal Pattern Generator
 Underscan/ Overscan/ Normal / Zoom
 Programmable Front Pushbutton Controls
 Intuitive OSD Display
 Remote Control For Wall Control System
 Programmable GPI control
 RS 422 Remote Control

BLM-DUAL 170: Dual HD SDI YPbPr 4:2:2
 Dual HD SDI YPbPr/RGB 4:4:4

OPTION : Rackmount, Hood, V-mount, Wallmount, Carrying Case

Multi Format 20 Inch LCD Monitor



BLM-BASIC 200

Complies with EBU-2330 TECH, SMPTE-C and ITU-R BT.709 Standards
 Cutting edge De-interlacing and Scaling Technology
 Fast Response Time for high motion video
 1680x 1050 (16:10) Native Resolution
 300 cd High Brightness, 800:1 Contrast
 178° Viewing Angle Display
 HD/SD SDI, Composite, RGB, YUV, Y/C, UXGA and DVI Inputs
 Supports all HD/SD signal formats @ 50Hz and 60Hz respectively
 Analog & Embedded Audio Inputs, Internal Speaker
 Intelligent Connection for Alignment & Calibration (ICAC)
 Pixel to Pixel Mode, Tally
 Waveform Function, Vector Scope, 16 CH Audio Metering Display, VITC
 Various Markers Display, Safe Area in HD & SD
 H/V delay and Mono Controls, Picture and Picture
 Closed Caption Decoding, Internal Pattern Generator
 Underscan/ Overscan/ Normal / Zoom
 Programmable Front Pushbutton Controls
 Intuitive OSD Display
 Remote Control For Wall Control System
 Programmable GPI control
 RS 422 Remote Control

OPTION : Rackmount, Hood, Wallmount, Carrying Case



The Perfect Technologies

Professional Broadcast Monitor

Multi Format 24 Inch LCD Monitor



BLM-BASIC 240



BLM-DUAL 240



BLM-QUAD 240
(Built-In Multiviewer)

Complies with EBU-2330 TECH, SMPTE-C and ITU-R BT.709 Standards
 Cutting edge De-interlacing and Scaling Technology
 Fast Response Time for high motion video
 1920 x 1200 (16:10) Native Resolution
 400 cd High Brightness, 800:1 Contrast
 178° Viewing Angle Display
 HD/SD SDI, Composite, RGB, YUV, Y/C, UXGA and DVI Inputs
 Supports all HD/SD signal formats @ 50Hz and 60Hz respectively
 Analog & Embedded Audio Inputs, Internal Speaker
 Intelligent Connection for Alignment & Calibration (ICAC)
 Pixel to Pixel Mode, Tally
 Waveform Function, Vector Scope, 16 CH Audio Metering Display, VITC
 Various Markers Display, Safe Area in HD & SD
 H/V delay and Mono Controls, Picture and Picture
 Closed Caption Decoding, Internal Pattern Generator
 Underscan/ Overscan/ Normal / Zoom
 Programmable Front Pushbutton Controls
 Intuitive OSD Display
 Remote Control For Wall Control System
 Programmable GPI control
 RS 422 Remote Control

BLM-DUAL 240: Dual HD SDI YPbPr 4:2:2
 Dual HD SDI YPbPr/RGB 4:4:4

BLM-QUAD 240: Built-in multiviewer with 4 inputs HD/SDI & Analog

OPTION : Rackmount, Wallmount , Carrying Case

Multi Format 26 Inch LCD Monitor



BLM-BASIC 260

Complies with EBU-2330 TECH, SMPTE-C and ITU-R BT.709 Standards
 Cutting edge De-interlacing and Scaling Technology
 Fast Response Time for high motion video
 1920 x 1200 (16:10) Native Resolution
 500 cd High Brightness, 800:1 Contrast
 178° Viewing Angle Display
 HD/SD SDI, Composite, RGB, YUV, Y/C, UXGA and DVI Inputs
 Supports all HD/SD signal formats @ 50Hz and 60Hz respectively
 Analog & Embedded Audio Inputs, Internal Speaker
 Intelligent Connection for Alignment & Calibration (ICAC)
 Pixel to Pixel Mode, Tally
 Waveform Function, Vector Scope, 16 CH Audio Metering Display, VITC
 Various Markers Display, Safe Area in HD & SD
 H/V delay and Mono Controls, Picture and Picture
 Closed Caption Decoding, Internal Pattern Generator
 Underscan/ Overscan/ Normal / Zoom
 Programmable Front Pushbutton Controls
 Intuitive OSD Display
 Remote Control For Wall Control System
 Programmable GPI control
 RS 422 Remote Control

OPTION: Wallmount, Carrying Case



The Perfect Technologies

Professional Broadcast Monitor

Multi Format 32 Inch LCD Monitor



BLM-BASIC 320

Complies with EBU-2330 TECH, SMPTE-C and ITU-R BT.709 Standards
Cutting edge De-interlacing and Scaling Technology
Fast Response Time for high motion video
1366 x 768 (16:9) Native Resolution
500 cd High Brightness, 1000:1 Contrast
178° Viewing Angle Display
HD/SD SDI, Composite, RGB, YUV, Y/C, UXGA and DVI Inputs
Supports all HD/SD signal formats @ 50Hz and 60Hz respectively
Analog & Embedded Audio Inputs, Internal Speaker
Intelligent Connection for Alignment & Calibration (ICAC)
Pixel to Pixel Mode, Tally
Waveform Function, Vector Scope, 16 CH Audio Metering Display, VITC
Various Markers Display, Safe Area in HD & SD
H/V delay and Mono Controls, Picture and Picture
Closed Caption Decoding, Internal Pattern Generator
Underscan/ Overscan/ Normal / Zoom
Programmable Front Pushbutton Controls
Intuitive OSD Display
Remote Control For Wall Control System
Programmable GPI control
IR & RS 422 Remote Control

OPITION: Wallmount, Carrying Case

Multi Format 37 Inch LCD Monitor



BLM-BASIC 370

Complies with EBU-2330 TECH, SMPTE-C and ITU-R BT.709 Standards
Cutting edge De-interlacing and Scaling Technology
Fast Response Time for high motion video
1920 x 1080 (16:9) Native Resolution
500 cd High Brightness, 800:1 Contrast
178° Viewing Angle Display
HD/SD SDI, Composite, RGB, YUV, Y/C, UXGA and DVI Inputs
Supports all HD/SD signal formats @ 50Hz and 60Hz respectively
Analog & Embedded Audio Inputs, Internal Speaker
Intelligent Connection for Alignment & Calibration (ICAC)
Pixel to Pixel Mode, Tally
Waveform Function, Vector Scope, 16 CH Audio Metering Display, VITC
Various Markers Display, Safe Area in HD & SD
H/V delay and Mono Controls, Picture and Picture
Closed Caption Decoding, Internal Pattern Generator
Underscan/ Overscan/ Normal / Zoom
Programmable Front Pushbutton Controls
Intuitive OSD Display
Remote Control For Wall Control System
Programmable GPI control
IR & RS 422 Remote Control

OPITION: Wall mount, Carrying Case



The Perfect Technologies

Professional Broadcast Monitor

Multi Format 42 Inch LCD Monitor



BLM-BASIC 420



**BLM-QUAD 420
(Built-In Multiviewer)**

Complies with EBU-2330 TECH, SMPTE-C and ITU-R BT.709 Standards
 Cutting edge De-interlacing and Scaling Technology
 Fast Response Time for high motion video
 1920 x 1080 (16:9) Native Resolution
 500 cd High Brightness, 1300:1 Contrast
 178° Viewing Angle Display
 HD/SD SDI, Composite, RGB, YUV, Y/C, UXGA and DVI Inputs
 Supports all HD/SD signal formats @ 50Hz and 60Hz respectively
 Analog & Embedded Audio Inputs, Internal Speaker
 Intelligent Connection for Alignment & Calibration (ICAC)
 Pixel to Pixel Mode, Tally
 Waveform Function, Vector Scope, 16 CH Audio Metering Display, VITC
 Various Markers Display, Safe Area in HD & SD
 H/V delay and Mono Controls, Picture and Picture
 Closed Caption Decoding, Internal Pattern Generator
 Underscan/ Overscan/ Normal / Zoom
 Programmable Front Pushbutton Controls
 Intuitive OSD Display
 Remote Control For Wall Control System
 Programmable GPI control
 IR & RS 422 Remote Control

BLM- QUAD 420: Built-in multiviewer with 4 inputs HD/SDI & Analog

OPITION: Wall mount, Carrying Case

Multi Format 47 Inch LCD Monitor



BLM-BASIC 470



**BLM-QUAD 470
(Built-In Multiviewer)**

Complies with EBU-2330 TECH, SMPTE-C and ITU-R BT.709 Standards
 Cutting edge De-interlacing and Scaling Technology
 Fast Response Time for high motion video
 1920 x 1080 (16:9) Native Resolution
 500 cd High Brightness, 1300:1 Contrast
 178° Viewing Angle Display
 HD/SD SDI, Composite, RGB, YUV, Y/C, UXGA and DVI Inputs
 Supports all HD/SD signal formats @ 50Hz and 60Hz respectively
 Analog & Embedded Audio Inputs, Internal Speaker
 Intelligent Connection for Alignment & Calibration (ICAC)
 Pixel to Pixel Mode, Tally
 Waveform Function, Vector Scope, 16 CH Audio Metering Display, VITC
 Various Markers Display, Safe Area in HD & SD
 H/V delay and Mono Controls, Picture and Picture
 Closed Caption Decoding, Internal Pattern Generator
 Underscan/ Overscan/ Normal / Zoom,
 Programmable Front Pushbutton Controls
 Intuitive OSD Display, Remote Control For Wall Control System
 Programmable GPI control, IR & RS 422 Remote Control

BLM-QUAD 470: Built-in multiviewer with 4 inputs HD/SDI & Analog autosensing

OPITION: Wall mount, Carrying Case



The Perfect Technologies

Professional Broadcast Monitor

Multi Format 57 Inch LCD Monitor



BLM-BASIC 570

Complies with EBU-2330 TECH, SMPTE-C and ITU-R BT.709 Standards
Cutting edge De-interlacing and Scaling Technology
Fast Response Time for high motion video
1920 x 1080 (16:9) Native Resolution
600 cd High Brightness, 2000:1 Contrast
178° Viewing Angle Display
HD/SD SDI, Composite, RGB, YUV, Y/C, UXGA and DVI Inputs
Supports all HD/SD signal formats @ 50Hz and 60Hz respectively
Analog & Embedded Audio Inputs, Internal Speaker
Intelligent Connection for Alignment & Calibration (ICAC)
Pixel to Pixel Mode, Tally
Waveform Function, Vector Scope, 16 CH Audio Metering Display, VITC
Various Markers Display, Safe Area in HD & SD
H/V delay and Mono Controls, Picture and Picture
Closed Caption Decoding, Internal Pattern Generator
Underscan/ Overscan/ Normal / Zoom
Programmable Front Pushbutton Controls
Intuitive OSD Display
Remote Control For Wall Control System
Programmable GPI control
IR & RS 422 Remote Control

OPTION: Wall mount, Carrying Case



The Perfect Technologies

Professional Broadcast Monitor

Superior Black Color Display

Superior Black Level Performance

De-Interlacing & Scaling Technology

Cutting edge De-Interlacing and Scaling Technology using Motion Adaptive De-Interlacing. This method greatly improves image quality for both static and fast moving objects due to high motion detection accuracy. Its has very flexible hardware architecture or quick product deployment.



[WITHOUT MADI, LADI]



[WITH MADI, LADI]



[Circle Pattern]



[Others]



[BON]

ICAC

(Intelligent Connection for Alignment & Calibration)

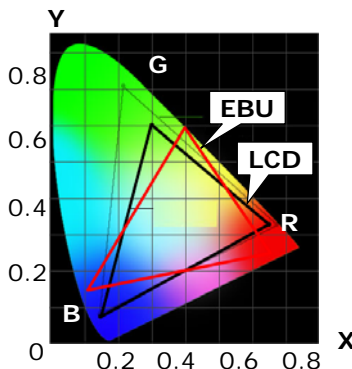
BON ICAC tool allows a perfect color alignment to our new and advanced monitors. Our ICAC is compatible with two different color probes;

- Konica Minolta CA-210
- Kevin K-10 Probe



EBU Color Space

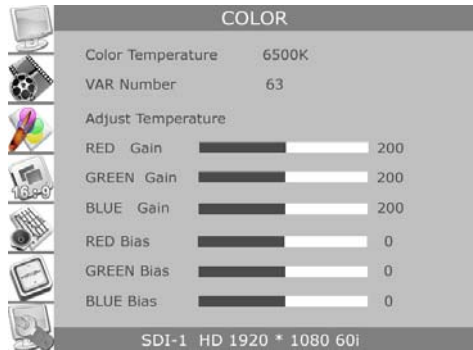
For outstanding picture performance, BLM models provide accurate colors in accordance with SMPTE and EBU global standard. BLM displays are factory calibrated closely to REC 709 specifications and remain in color alignment considerable longer than CRT displays that end to "drift" and change colourimetry noticeably over time. The digital technology of BLM give more constant and reliable colourimetry.



Color Calibration for Professional Broadcasting Application

Color mode, color adjustment and color temperature can be automatically set through auto color calibration software. The color compensation and adjustment is conducted and rated gamma properties are reproduced and gradation suitable for broadcasting is obtained.

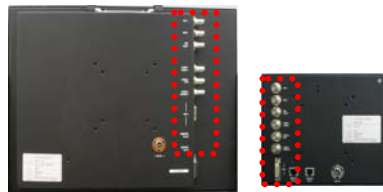
[Color Calibration Setup Menu]



Color temperature: 3200',5400',6500',9300', User.

HD 2k Format Variable HD/SD-SDI video signal including HD 2k Format, etc and DVI Input supporting

Without extra input port, there are various kind of input of HD/SD-SDI/Analog, etc and various multi-format of HD&SD Video Display including DVI input.



- HD standard SDI
 - 2k Format (2048 × 1080.24sf)
 - SMPTE-274M (1920 × 1080i)
 - SMPTE-295M (1920 × 1080p)
 - SMPTE-260M (1920 × 1035i)
 - SMPTE-296M (1280 × 720p)
- Dual Link HD-SDI (1920 × 1080/50p,60p)
- SD standard SDI
 - SMPTE-259M (720 × 576i)
 - SMPTE-125M (720 × 480i)
- Analog standard signal
 - CVBS, S-Video,(525/625,PAL/NTSC)
 - Component (Y,Pb,Pr/RGB): Max 1920×1080

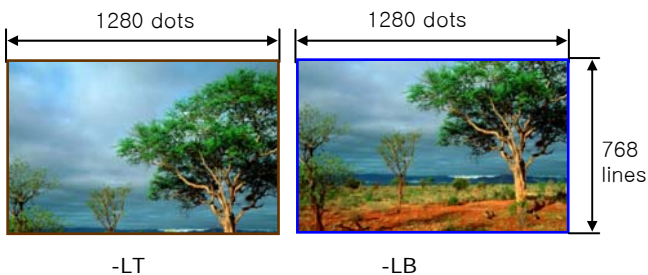
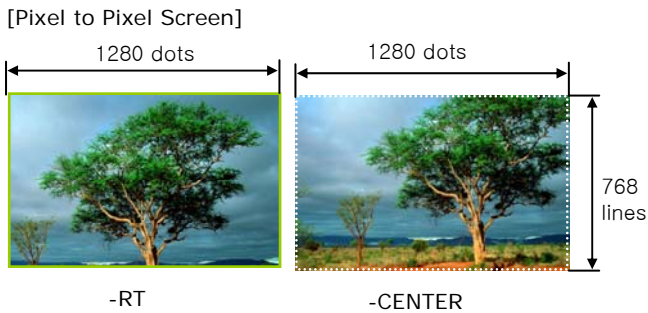
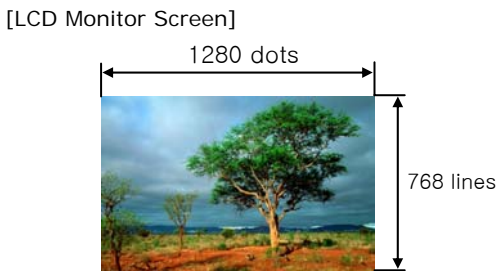
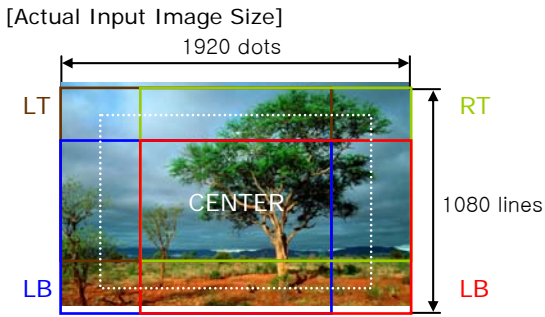


The Perfect Technologies

Professional Broadcast Monitor

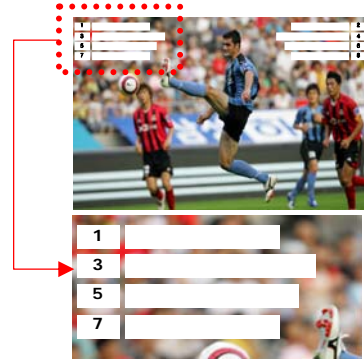
Pixel to Pixel (BLM-070/084/BLM-170/200)

The function of pixel to pixel can be displayed by HD-SDI input video pixel without resizing. In case of 1080i video signal, the display areas are available with 5 each of range of LT/RT/LB/RB/CENTER. This function can be used with BLM-070, BLM-084, BLM-170 & BLM-200 models.



Audio Level Meter

Audio de-embedding is provided from HD/SD inputs. The internal stereo speakers can select any of the 16 channels extracted from within SDI signal stream. The dynamic audio level bar graph meters simultaneously display the presence of up to 8 channels of the sixteen available channels of audio embedded in the SDI stream.



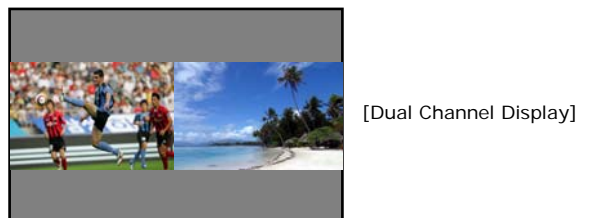
Waveform Monitoring & Vector Scope

The extent of input signal is displayed as waveform and vector scope. The display position is available on the four corners of the screen.



Multiple Channel on Split Screen (PIP and PAP)

This function can show dual channels display in a each frame through HD/SD SDI, DVI, PC-RGB, Composite and Component.





The Perfect Technologies

Professional Broadcast Monitor

Easy OSD Menu

This OSD menu have front panel push buttons for all key operational function as well as a simple OSD for accessing the comprehensive range of set-up functions which are easily configured from intuitive menus.



[Image Control]



[Display Control]



[Marker Control]

Various Marker Display

This function supports various marker function as 16 versus 9 and 4 versus 3 mode in case of HD-SDI & CVBS Display input signal.

16:9 Mode	Aspect Marker: 15:9,14:9,13:9,4:3 Safety Area: Off,95%,93%,88%,85%,80%
4:3 Mode	Aspect Marker: 16:9,4:3,1.85:1/15 Safety Area : Off,95%,93%,88%,85%,80%

[16:9 Mode]



-Safety Area(95%)

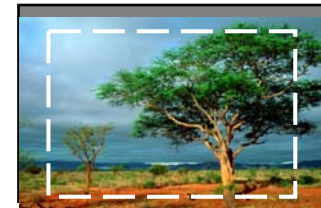


-Aspect Marker(13:9)
Safety Area(80%)

[4:3 Mode]



-Safety Area(95%)



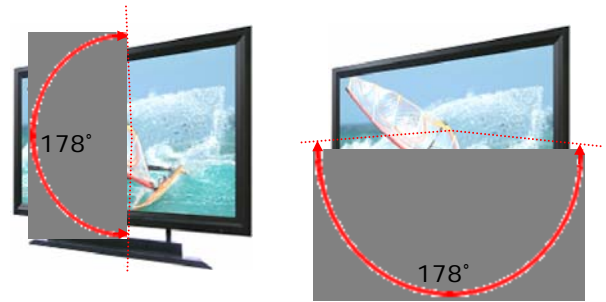
-Aspect Marker(16:9)
Safety Area(80%)

Precision Monitoring

This product is supporting precisely monitoring with the function of under scan/ zero scan/ over scan/ scan mode, Zoom, H/V delay, Aspect, PaP/ PiP, Blue and Mono Monitoring.

Wide 178 ° Horizontal or Vertical Viewing Angle

BON models have wide horizontal and vertical viewing angle of up to 178 degrees in both axis.

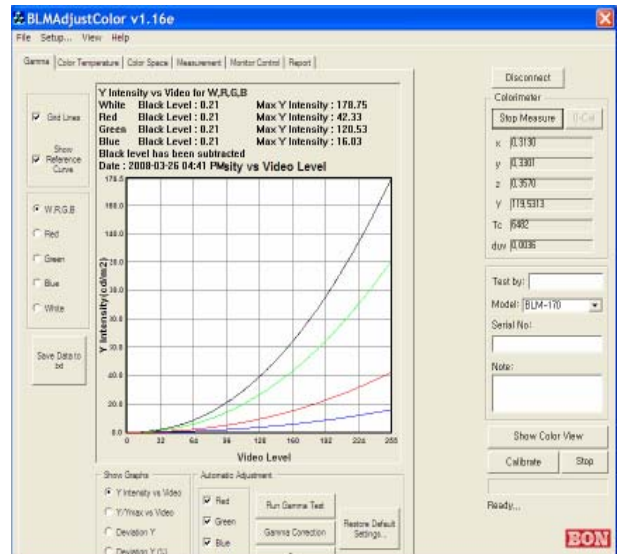


TALLY Lamp

The function of on Air Tally make this product suitable as professional Broadcasting equipment.

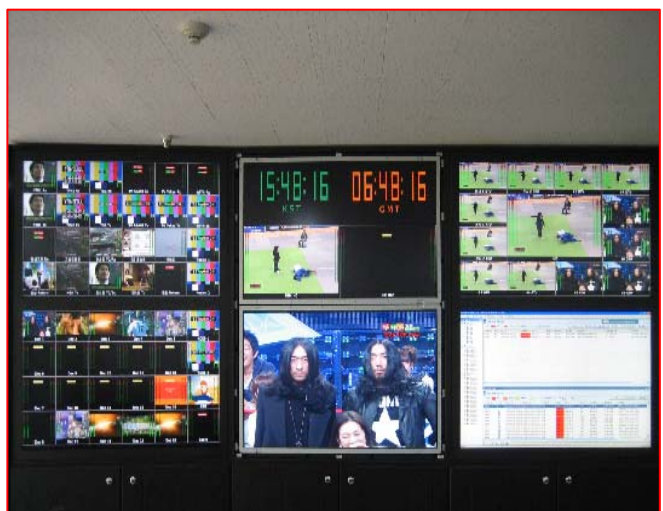
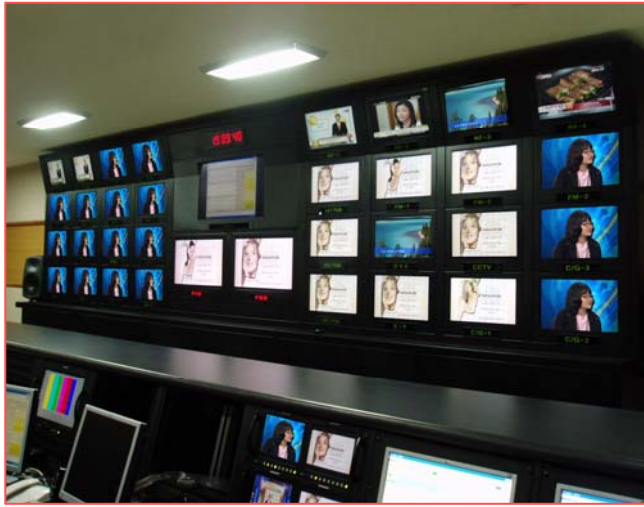
Gamma Adjustments

For making BLM Monitors suitable for professional broadcasting applications, compensation is conducted for BLM series in 256(8bit) or 1024(10bit) discrete RGB step, rated gamma properties are reproduced, and gradation suitable for broadcasting is achieved.





The Perfect Technologies Professional Broadcast Monitor





The Perfect Technologies

Professional Broadcast Monitor





The Perfect Technologies

Professional Broadcast Monitor





The Perfect Technologies

Professional Broadcast Monitor

Monitor Feature Guide for BLM Series

Function	BLM BASIC Series		BLM DUAL Series
Model	BLM-PRO 070 BLM-BASIC 084	BLM-BASIC 170 BLM-BASIC 200 BLM-BASIC 240 BLM-BASIC 260 BLM-BASIC 320 BLM-BASIC 420 BLM-BASIC 470 BLM-BASIC 570	BLM-DUAL 170 BLM-DUAL 240 BLM-DUAL 420 BLM-DUAL 470
HD-SDI Input	O	O	O (2 CH)
SD-SDI Input	O	O	O (2 CH)
RGB Input	O	O	O
YPbPr Input	O	O	O
CVBS(NTSC/PAL) Input	O	O	O
YPbPr /RGB Loop Input	O	O	O
SDI Loop Output	1ch Selected	1ch Selected	2 ch Selected
Dual Link HD-SDI Format	X	X	O
Fast Mode/ Closed Caption / HDMI	X (Only CC)	X (Only CC)	O
HD 2K Format(2048/23.98,24sf/psf)	O	O	O
High Speed Display (I->P Mode)	X	O	O
Auto Color Calibration	O	O	O
EBU Color Coordination	O	O	O
Pixel to Pixel Display	5Area	5Area(17)	5Area(17)
Audio Level Meter	O	O	O
Time Code Display, Internal Pattern Generator	O	O	O
Waveform Monitoring, Vector Scope	O	O	O
Marker/Safety Area Display	O	O	O
PaP (SDI/Analog) & PiP (Picture in Picture)	O (PaP)	O (PaP)	O (Both)
Aspect	O	O	O
Input Mode Display	O	O	O
Anamorphic Mode display	O	O	O
Wired remote/Update Port	RJ-45/RJ-11	RJ-45/RJ-11	RJ-45/RJ-11
Built-in Speaker	X (7" Speaker)	Stereo, 17"(Mono)	Stereo, 17"(Mono)
Blue Only/Mono	O	O	O
H/V Delay	O	O	O
FAN Motor On/Off	X	O (BLM-170)	O (BLM-170)
H/V Position Adjust	O (PC-RGB)	O (PC-RGB)	O (PC-RGB)
Video 7.5IRE Setup	O	O	O
Clock/Phase Adjust (VGA)	O	O	O
Setup User Save Mode	O	O	O
Picture Adjust (Front)	Brightness, Contrast, Hue, Saturation, Sharpness, Speaker Volume	Brightness, Contrast, Hue, Saturation, Sharpness, Speaker Volume	Brightness, Contrast, Hue, Saturation, Sharpness, Speaker Volume
1:1 SCAN	X	O	O
Operating Time Function	O	O	O
TALLY Lamp	O	O	O
Power Supply	12V DC	(AC 100~230V) DC Battery-BLM170	AC 100~230V) DC Battery-BLM170
Battery Mount (Option)	O	O (BLM-170)	O (BLM-170)
Ear Phone Jack	X	O	O



The Perfect Technologies

Professional Broadcast Monitor

Function		BLM-070	BLM-084	BLM-170
SDI-INPUT	Input Channel	1 channel	2 channels	
	Input Signal	800mVp-p ± 10%, 75Ω		
	HD-SDI Signal	Max, 1.485Gbps		
	SD-SDI Signal	Max, 270Mbps		
SDI-OUTPUT	LOOP Output Channel	1 Channel, Selected Output		
	Output Signal	800mVp_p ± 10%, 75Ω		
VGA INPUT	Input Channel	1 Channel		
	Analog Level	R, G, B : 0.7Vp-p, H/V Sync : 4V ± 1Vp-p		
	Input Mode	640 X 480 up to 1280 X 1024, max 1600 X 1200		
DVI INPUT	Input Channel	1 Channel		
	DVI – Interface	TMDS Single Link (DVI Standard)		
	DVI Digital Mode	640 X 480 up to 1920 X 1200	640 X 480 up to 1920 X 1200	640 X 480 up to 1920 X 1200
ANALOG INPUT	Input Channel	3 Channels		
	CVBS	3ch,1.0Vp-p , NTSC/PAL		
	YC(S-Video)	Y :1.0Vp-p, C:0.286Vp-p		
	Component (Y, Pb, Pr)	Y :1.0Vp-p, Pb :0.7Vp-p, Pr :0.7Vp-p		
	Component (RGB)	G :1.0Vp-p(with Sync), B :0.7Vp-p, R :0.7Vp-p		
	Analog Video Format	480i(59.94),576i(50)		
SDI DIGITAL FORMAT	SMPTE-274M/295M (1920*1080)	1080i(60/59.94/50) 1080p(30/29.97/24/25/24sf/23.98/23.98sf)		
	SMPTE-296M (1280*720)	720p(60/59.94/50)		
	SMPTE-260M (1920*1035)	1035i(60/59.94)		
	SMPTE-259M/125M /ITU-R BT656(720*480/576)	480i(59.94) 576i(50)		
Speaker	Internal	1	-	2
LCD	Size	7"	8.4"	17"
	Resolution	800 X 480	1024 X 768	1366 X 768
	Pixel Pitch	0.19 mm	0.166 mm	0.091*0..273 mm
	Color	16.7M	16.7M	16.7M
	Viewing Angle	H:130,V:115 degrees	R/L:170, U/D:170 degrees	R/L:178, U/D:178 degrees
	Luminance of White	350 cd	400 cd	350 cd
	Contrast	300 : 1	400 : 1	900 : 1
	Display Area (H X V)	152.4 X 91.44 mm	170.5 X 127.9 mm	372.91 X 209.66mm
POWER	DC Adaptor(12V 5A)	DC Adaptor(12V 5A)	AC 100-230V / DC Adaptor(12V 5A)	
Operating Temperature	0°C ~40°C(32°F~ 104°F)			
Weight (without Stand)	2 kg – 4.409 lbs	3 kg – 6.613 lbs	8 kg – 17.636 lbs	
Dimension (W X H X D) without Box & Stand	203 X 132 X 52 mm	207 X 177 X 66.8 mm	421.6 X 309 X 95.3 mm	
Accessory	Power Cord, Manual DVI to VGA Gender,	Power Cord, Manual DVI to VGA Gender,	Power Cord, Manual, DVI to VGA Gender, Stand Mount	
Option	Hood, Rack Mount, Carrying Case, Vertical/Wall Mount, ND Filter	Hood, Rack Mount, Carrying Case, V-Mount, Vertical/Wall Mount, ND Filter	Hood, Rack Mount, Carrying Case, V-Mount, Vertical/Wall Mount, ND Filter	



The Perfect Technologies

Professional Broadcast Monitor

Function		BLM-200	BLM-240	BLM-260
SDI-INPUT	Input Channel	2 Channels		
	Input Signal	800mVp-p ± 10%, 75Ω		
	HD-SDI Signal	Max, 1.485Gbps		
	SD-SDI Signal	Max, 270Mbps		
SDI-OUTPUT	Output Channel	1 Channel Selected Output		
	Output Signal	800mVp_p ± 10%, 75Ω		
VGA INPUT	Input Channel	1 Channel		
	Analog Level	R, G, B : 0.7Vp-p, H/V Sync : 4V ± 1Vp-p		
	Input Mode	640 X 480 up to 1280 X 1024, max 1600 X 1200		
DVI INPUT	Input Channel	1 Channel		
	DVI – Interface	TMDS Single Link (DVI Standard)		
	DVI Digital Mode	640 X 480 up to 1920 X 1200	640 X 480 up to 1920 X 1200	640 X 480 up to 1920 X 1200
ANALOG INPUT	Input Channel	3 Channels, 75Ω,BNC Jack		
	CVBS	3 ch,1.0Vp-p , NTSC/PAL		
	YC(S-Video)	Y :1.0Vp-p, C:0.286Vp-p		
	Component (Y, Pb, Pr)	Y :1.0Vp-p, Pb :0.7Vp-p, Pr :0.7Vp-p		
	Component (RGB)	G :1.0Vp-p(with Sync), B :0.7Vp-p, R :0.7Vp-p		
	Analog Video Format	480i(59.94),576i(50)		
SDI DIGITAL FORMAT	SMPTE-274M/295M (1920*1080)	1080i(60/59.94/50) 1080p(30/29.97/24/25/24sf/23.98/23.98sf)		
	SMPTE-296M (1280*720)	720p(60/59.94/50)		
	SMPTE-260M (1920*1035)	1035i(60/59.94)		
	SMPTE-259M/125M /ITU-R BT656(720*480/576)	480i(59.94) 576i(50)		
Speaker	Internal	2	2	2
LCD	Size	20"	24"	26"
	Resolution	1680 X 1050	1920 X 1200	1920 X 1200
	Pixel Pitch	0.258 mm	0.270 mm	0.2865 mm
	Color	16.7M	16.7M	16.7M
	Viewing Angle	R/L:178 , U/D:178 degrees	R/L : 178 , U/D : 178 degrees	R/L : 178 , U/D : 178 degrees
	Luminance of White	300 cd	500 cd	500 cd
	Contrast Ratio	800 : 1	800 : 1	800 : 1
	Display Area (H X V)	433.4 X 270.90 mm	518.4 X 324 mm	550.08 X 343.8 mm
POWER	AC 100 – 230V/ DC	AC 100 – 230V	AC 100 – 230V	
Operating Temperature	0°C ~40°C(32°F~104°F)			
Weight (without Stand)	12 kg – 28.660 lbs	16 kg – 35.273 lbs	18 kg – 39.683 lbs	
Dimension (W X H X D) without Box & Stand	469.6 x 342 x 102.9 mm	554.6 x 395 x 90 mm	509.2 x 427.5 x 112 mm	
Accessory	Power Cord, Manual, DVI to VGA Adaptor, Desk Mount			
Option	ND Filter, Rack Mount, Wall Bracket, Carrying Case			



The Perfect Technologies

Professional Broadcast Monitor

Function		BLM-320	BLM-370	BLM-420
SDI-INPUT	Input Channel	2 Channels		
	Input Signal	800mVp-p ± 10%, 75Ω		
	HD-SDI Signal	Max, 1.485Gbps		
	SD-SDI Signal	Max, 270Mbps		
SDI-OUTPUT	Output Channel	1 Channel, Selected Output		
	Output Signal	800mVp_p ± 10%, 75Ω		
VGA INPUT	Input Channel	1 Channel		
	Analog Level	R, G, B : 0.7Vp-p, H/V Sync : 4V ± 1Vp-p		
	Input Mode	640 X 480 up to 1280 X 1024, max 1600 X 1200		
DVI INPUT	Input Channel	1 Channel		
	DVI – Interface	TMDS Single Link (DVI Standard)		
	DVI Digital Mode	640 X 480 up to 1920 X 1200	640 X 480 up to 1920 X 1200	640 X 480 up to 1920 X 1200
ANALOG INPUT	Input Channel	3 Channels		
	CVBS	3ch ,1.0Vp-p , NTSC/PAL		
	YC(S-Video)	Y :1.0Vp-p, C:0.286Vp-p		
	Component (Y, Pb, Pr)	Y :1.0Vp-p, Pb :0.7Vp-p, Pr :0.7Vp-p		
	Component (RGB)	G :1.0Vp-p(with Sync), B :0.7Vp-p, R :0.7Vp-p		
	Analog Video Format	480i(59.94),576i(50)		
SDI DIGITAL FORMAT	SMPTE-274M/295M (1920*1080)	1080i(60/59.94/50) 1080p(30/29.97/24/25/24sf/23.98/23.98sf)		
	SMPTE-296M (1280*720)	720p(60/59.94/50)		
	SMPTE-260M (1920*1035)	1035i(60/59.94)		
	SMPTE-259M/125M /ITU-R BT656(720*480/576)	480i(59.94) 576i(50)		
Speaker	Internal	2	2	2
LCD	Size	32"	37"	42"
	Resolution	1366 X 768	1920 X 1080	1920 X 1080
	Pixel Pitch	0.170*0.510 mm	0.42675 mm	0.4845 mm
	Color	16.7M	16.7M	16.7M
	Viewing Angle	R/L : 178 , U/D : 178 degrees	R/L:178, U/D:178	R/L : 178 , U/D : 178 degrees
	Luminance of White	500 cd	500 cd/m ²	500 cd
	Contrast Ratio	1000 : 1	800:1	1300 : 1
	Display Area (H X V)	697.68 X 392.26 mm	819.36 x 460.89 mm	930.25 X 523.01 mm
POWER	AC 100 – 230V	AC 100 – 230V	AC 100 – 230V	
Operating Temperature	0°C ~40°C(32°F~104°F)			
Weight (without Stand)	34 kg – 74.957 lbs	40 kg – 88.184 lbs	44 kg – 97.003 lbs	
Dimension (W X H X D) without Box & Stand	783.4 x 488.25 x 98.6 mm	907.6 X 558.5 X 105.6 mm	1018.4 X 620 X 106 mm	
Accessory	Power Cord, Manual, DVI to VGA Adaptor, Desk Mount			
Option	ND Filter, Wall Bracket, Carrying Case			



The Perfect Technologies

Professional Broadcast Monitor

Function		BLM-470	BLM-570	
SDI-INPUT	Input Channel	2 Channels		
	Input Signal	800mVp-p ± 10%, 75Ω		
	HD-SDI Signal	Max, 1.485Gbps		
	SD-SDI Signal	Max, 270Mbps		
SDI-OUTPUT	Output Channel	1 Channel, Selected Output		
	Output Signal	800mVp_p ± 10%, 75Ω		
VGA INPUT	Input Channel	1 Channel		
	Analog Level	R, G, B : 0.7Vp-p, H/V Sync : 4V ± 1Vp-p		
	Input Mode	640 X 480 up to 1280 X 1024, max 1600 X 1200		
DVI INPUT	Input Channel	1 Channel		
	DVI – Interface	TMDS Single Link (DVI Standard)		
	DVI Digital Mode	640 X 480 up to 1920 X 1200	640 X 480 up to 1920 X 1200	
ANALOG INPUT	Input Channel	3 Channels		
	CVBS	3ch,1.0Vp-p , NTSC/PAL		
	YC(S-Video)	Y :1.0Vp-p, C:0.286Vp-p		
	Component (Y, Pb, Pr)	Y :1.0Vp-p, Pb :0.7Vp-p, Pr :0.7Vp-p		
	Component (RGB)	G :1.0Vp-p(with Sync), B :0.7Vp-p, R :0.7Vp-p		
	Analog Video Format	480i(59.94),576i(50)		
SDI DIGITAL FORMAT	SMPTE-274M/295M (1920*1080)	1080i(60/59.94/50) 1080p(30/29.97/24/25/24sf/23.98/23.98sf)		
	SMPTE-296M (1280*720)	720p(60/59.94/50)		
	SMPTE-260M (1920*1035)	1035i(60/59.94)		
	SMPTE-259M/125M /ITU-R BT656(720*480/576)	480i(59.94) 576i(50)		
Speaker	Internal	2	2	
LCD	Size	47"	57"	
	Resolution	1920 X 1080	1920 X 1080	
	Pixel Pitch	0.5415 mm	0.630 mm	
	Color	16.7M	16.7 M	
	Viewing Angle	R/L : 178 , U/D : 178 degrees	R/L : 178 , U/D : 178 degrees	
	Luminance of White	500 cd	600 cd	
	Contrast Ratio	1300 : 1	2000:1	
	Display Area (H X V)	1039.6 x 584.8 mm	1251.36 X 703.89 mm	
POWER		AC 100 – 230V	AC 100 – 230V	
Operating Temperature		0°C –40°C(32°F~104°F)		
Weight (without Stand)		50 kg – 110,231 lbs	60 kg – 132.277 lbs	
Dimension (W X H X D) without Stand		1128.6 X 683.4 X 105.9 mm	1370.4 X 804.4 X 115 mm	
Accessory		Power Cord, Manual, DVI to VGA Adaptor, Desk Mount		
Option		ND Filter, Wall Bracket, Carrying Case		



The Perfect Technologies

Professional Broadcast Monitor

List of Compatible Signal Formats

1. Video Signal

NO	Input Signal Formats	Composite Video	Component		HD/SD-SDI	DVI
			Y,Pb,Pr	R,G,B(sog)		
1	NTSC (525/59.94i)	√	-	-	-	-
2	PAL (625/50i)	√	-	-	-	-
3	720*480/59.94i(SD/NTSC)	-	√	√	√	-
4	720*480/59.94p,60p	-	√	-	-	√
5	720*576/50i (SD/PAL)	-	√	√	√	-
6	720*576/50p	-	√	-	-	√
7	1280*720/59.94p	-	√	-	√	√
8	1280*720/60p	-	√	-	√	√
9	1280*720/50p	-	√	-	√	√
10	1920*1035/59.94i	-	√	-	√	-
11	1920*1035/60i	-	√	-	√	-
12	1920*1080/24sf	-	√	-	√	-
13	1920*1080/23.98sf	-	√	-	√	-
14	1920*1080/24p	-	√	-	√	-
15	1920*1080/23.98p	-	√	-	√	-
16	1920*1080/25p	-	√	-	√	√
17	1920*1080/29.97p	-	√	-	√	√
18	1920*1080/30p	-	√	-	√	√
19	1920*1080/50p	-	-	-	√ Dual	√
20	1920*1080/50i	-	√	-	√	√
21	1920*1080/59.94p	-	-	-	√ Dual	√
22	1920*1080/59.94i	-	√	-	√	√
23	1920*1080/60p	-	-	-	√ Dual	√
24	1920*1080/60i	-	√	-	√	√
25	2048*1080/24psf,sf	-	-	-	√	-

2. Computer Signal (PC-RGB/DVI)

NO	Input Signal Names	Screen Resolution	PC-RGB	DVI	Vertical Frequency
1	VGA	640*480	√	√	60Hz ~ 100Hz
2	SVGA	800*600	√	√	56Hz ~ 85Hz
3	XGA	1024*768	√	√	86Hz ~ 100Hz
4	WXGA	1280*768	√	√	50Hz ~ 85Hz
5	SXGA	1280*1024	√	√	60Hz ~ 76Hz
6	WSXGA+	1680*1050	√	√	50Hz~60Hz
7	UXGA	1600*1200	√	√	60Hz Only
8	WUXGA*	1920*1080	-	√ ,note1	60Hz
9	WUXGA	1920*1200	-	√ ,note1	60Hz,(PC Only)

Wall Mounts for BLM Series

■ MODEL : BMT-50W (42", 47", 57" Inch) – Wall Mount Bracket

SIZE : 600mm*400mm



■ MODEL : BMT-30W (24", 26", 32", 37" Inch) – Wall Mount Bracket

SIZE : 200mm*100mm, 200mm*200mm



■ MODEL : BMT-20W (8.4", 17", 20", 24" Inch) – Wall Mount Bracket

SIZE : 100mm*100mm



■ MODEL : BMT-10W (8.4", 17", 20", 24" Inch) – Wall Mount Bracket Slim

SIZE : 100mm*100mm





The Perfect Technologies

Professional Broadcast Monitor

Optional Accessories



RACK MOUNT BLM-084



RACK MOUNT BLM-170



HOOD-HANDLE
(BLM-084/BLM-170)



Tripod Head



V- MOUNT BLM-084/BLM-170



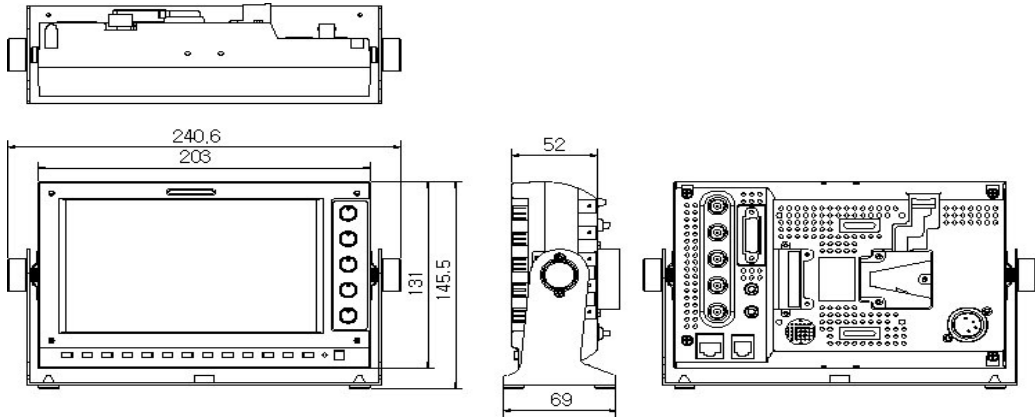
CARRYING CASE



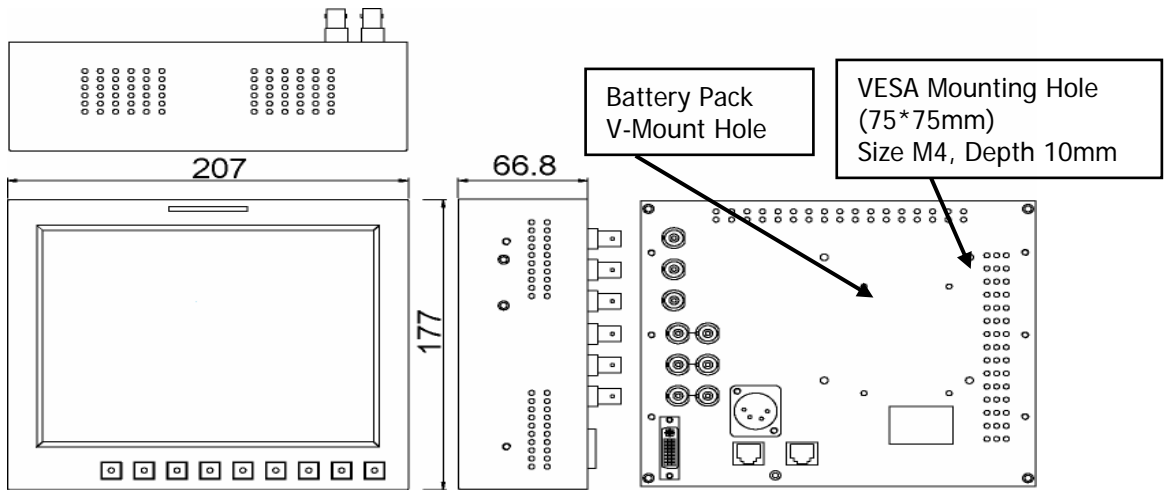
The Perfect Technologies

Professional Broadcast Monitor

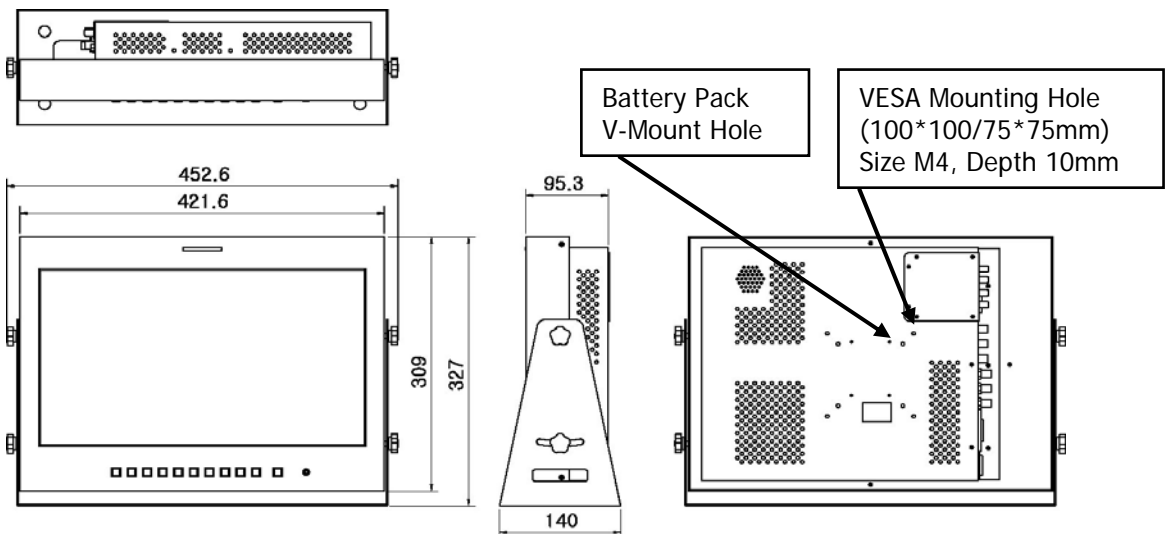
Dimensions



BLM-070 Dimensions (Unit: mm)



BLM-084 Dimensions (Unit: mm)

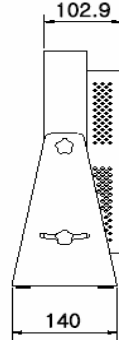
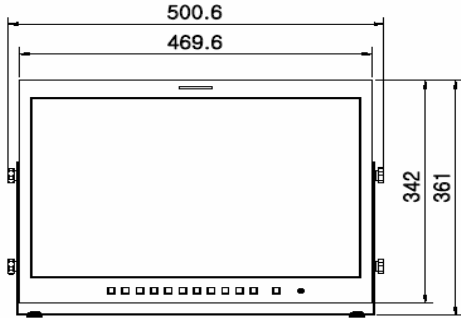
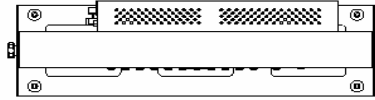


BLM-170 Dimensions (Unit: mm)

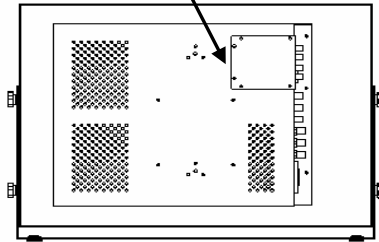


The Perfect Technologies

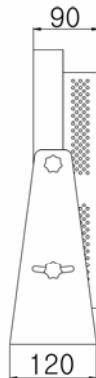
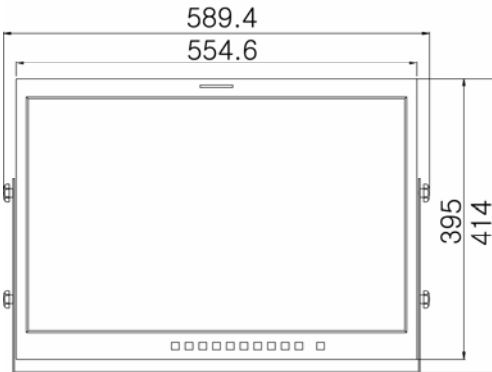
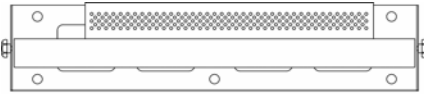
Professional Broadcast Monitor



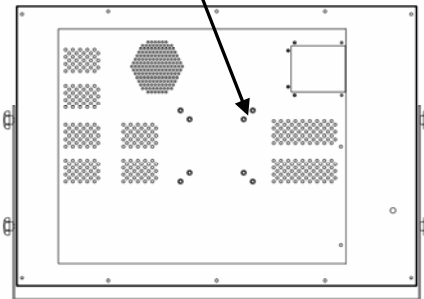
VESA Mounting Hole
(100*100)
Size M4, Depth 10mm



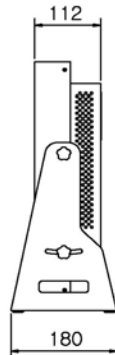
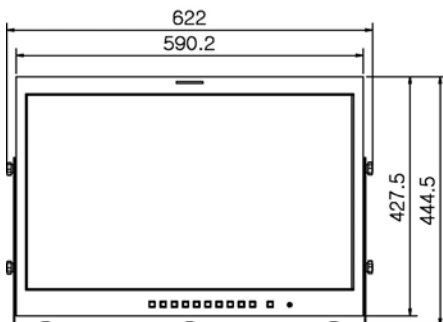
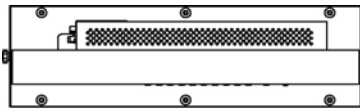
BLM-200 Dimensions (Unit: mm)



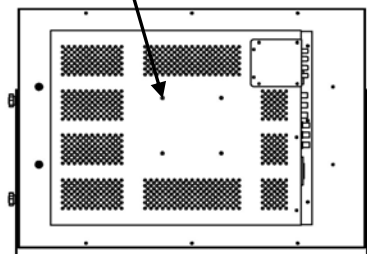
VESA Mounting Hole
(100*100/75*75mm)
Size M4, Depth 10mm



BLM-240 Dimensions (Unit: mm)



VESA Mounting Hole
(100*100/75*75mm)
Size M4, Depth 10mm

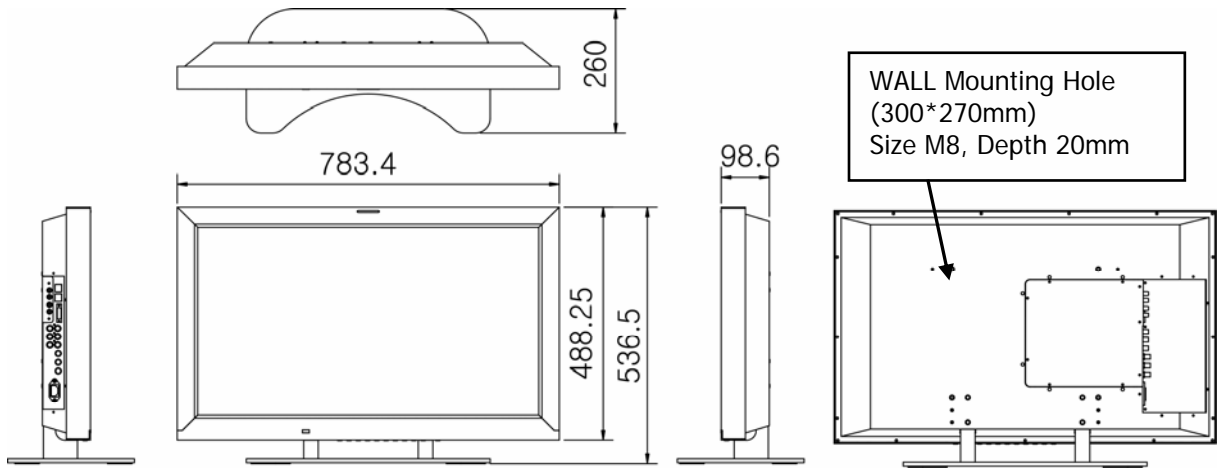


BLM-260 Dimensions (Unit: mm)

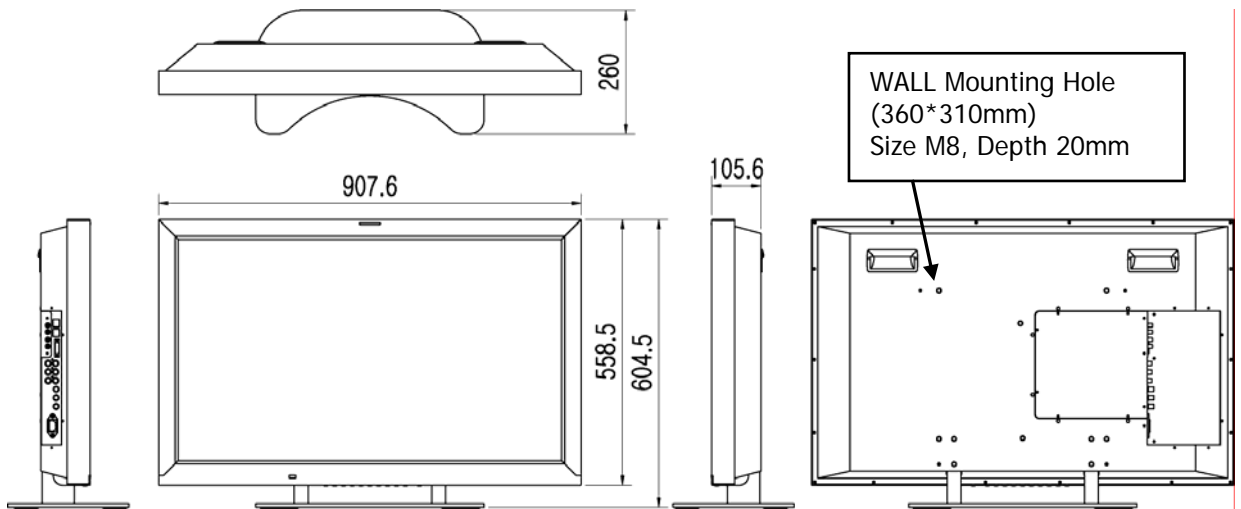


The Perfect Technologies

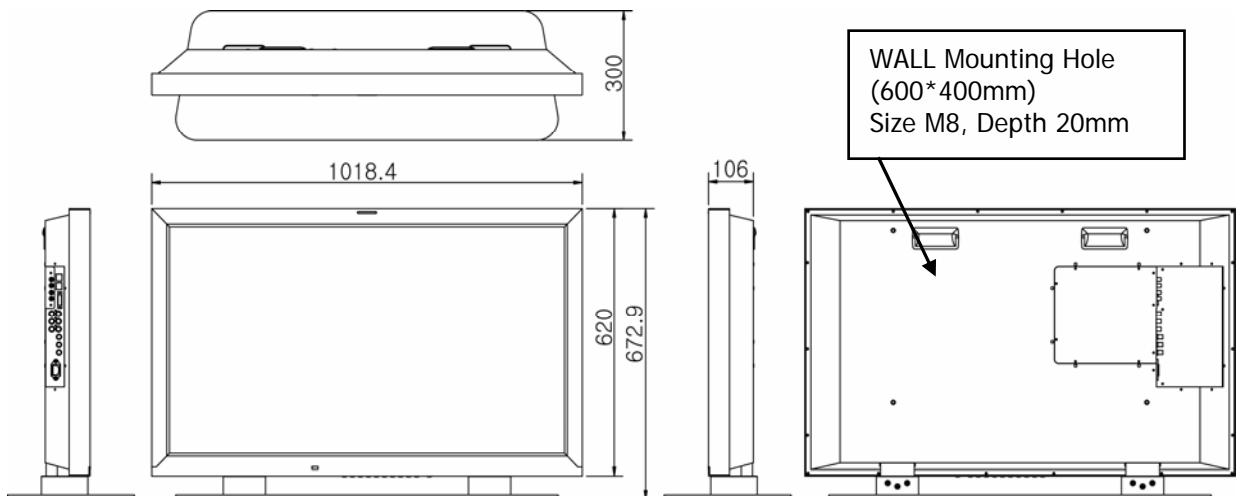
Professional Broadcast Monitor



BLM-320 Dimensions (Unit: mm)



BLM-370 Dimensions (Unit: mm)

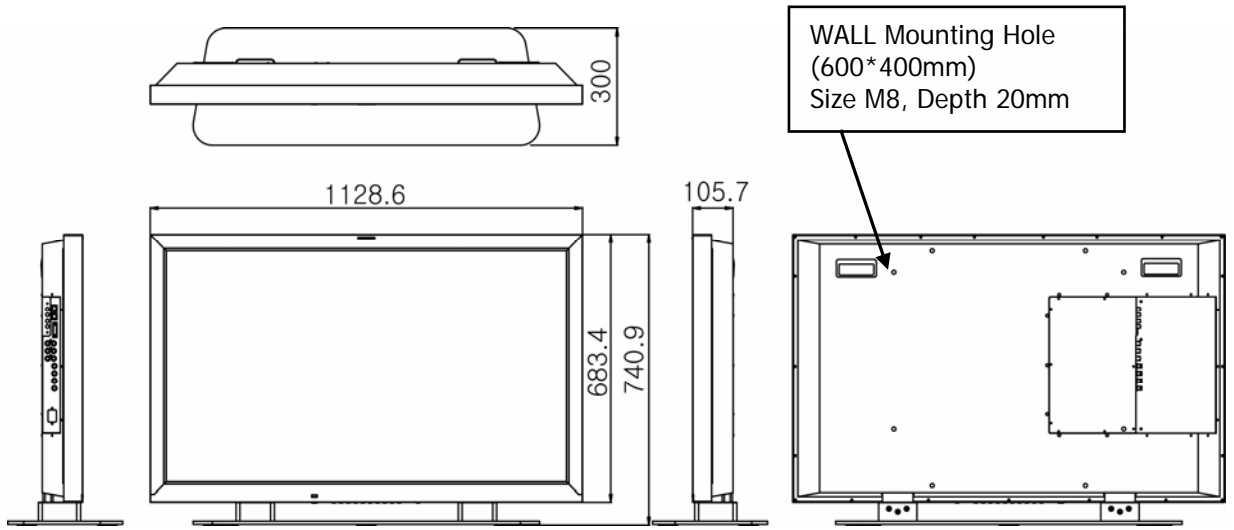


BLM-420 Dimensions (Unit: mm)

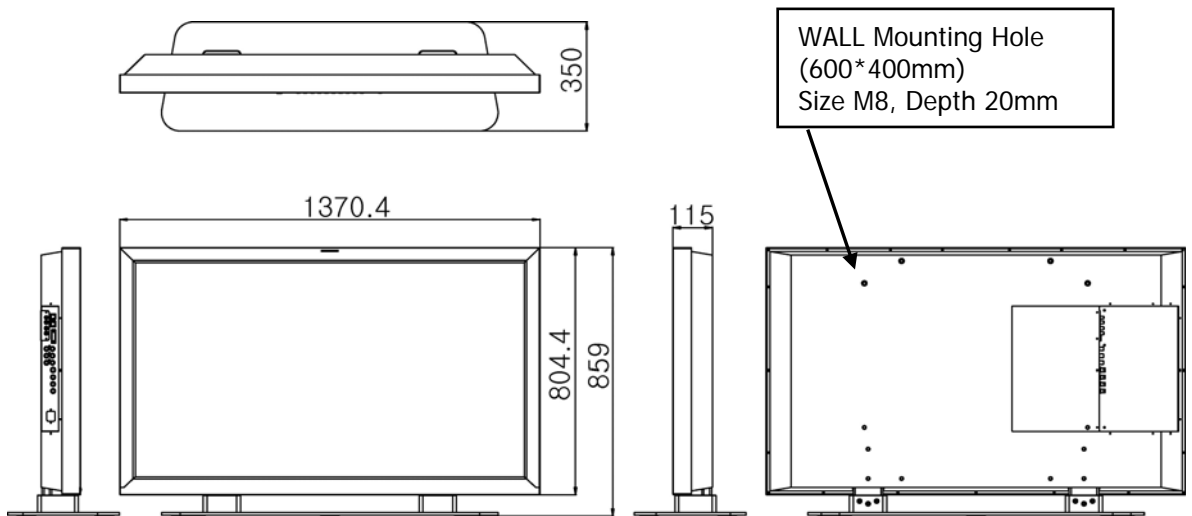


The Perfect Technologies

Professional Broadcast Monitor



BLM-470 Dimensions (Unit: mm)



BLM-570 Dimensions (Unit: mm)



The Perfect Technologies

Professional Broadcast Monitor



<http://www.bon.co.kr>

BON ELECTRO-TELECOM INC.

Head Office:

Tresbelle Sky 203, 1479-8 Gayang-Dong Gangso-Gu, Seoul 157-807. Korea

Phone : 82-2-2659-0333 Fax : 82-2-2659-8133 E-mail : edward@bon.co.kr

About BON ELECTRO-TELECOM INC.

We, BON ELECTRO TELECOM INC, have been developing and manufacturing security & broadcast products with our enthusiasm to satisfy all our customers since 1986 And now we have become famous all over the world in the field of security and broadcast market.

For more details about our product information, please visit our website at www.bon.co.kr and you will find useful information regarding our line of products.

* Web-site: www.bon.co.kr